

Zilla® Flashing Assembly

Zilla® Flashing is superior to all comparable products on the market, and can be used with any available standoff and or mounting components. The longevity of this product is outstanding, outlasting the roof and the solar system simply due to innovative engineering that protects all of the degradable components.

Zilla® Flashing Assembly sold in 4 piece component set

Assembly includes: Double Stud Bolt, Silicone Washer, Flashing & Base Plate

Pieces purchased separately upon request

Minimizes roof penetrations

Field adjustable for uneven surfaces when used in conjunction with Zilla® mounting options

Allows for the closest flush mount available in the market

PV, thermal, hot air installation - scalable solutions

Simple, versatile & superior in any environment

No need for caulking - unique Double Stud Assembly seals the Flashing

Patent Pending



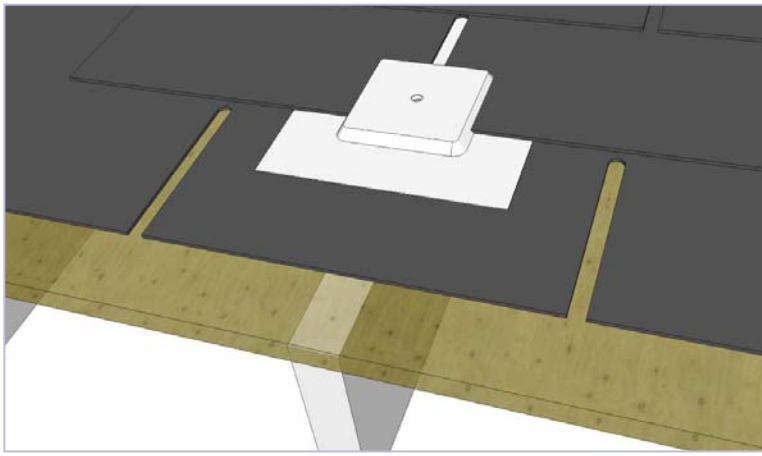
Guaranteed to BLOW THE COMPETITION AWAY!

Lasts longer than the roof & solar system!

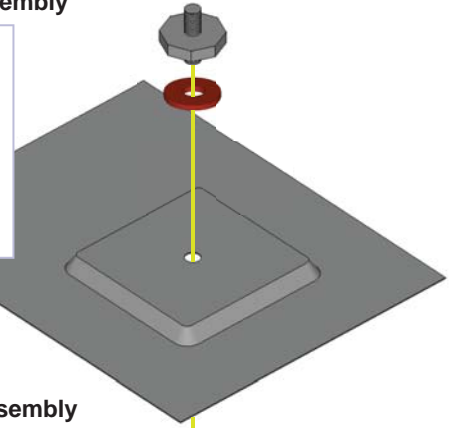
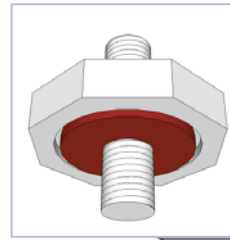


Simple

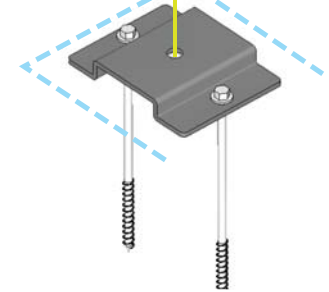
©2010 Next Generation Energy® All rights reserved.



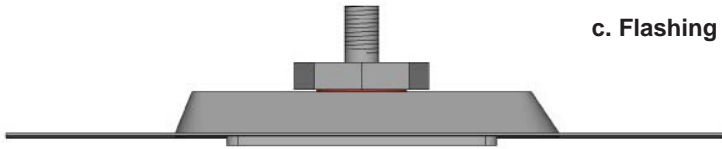
a. Double Stud Assembly







b. Zilla® Flashing Assembly
(chalk in blue)



c. Flashing Assembly Profile



Zilla® Flashing Components

Product	Product Number	Description	Materials	Size	Weight	Color	Finish	
 Double Stud	ZDS-ZP	Threaded double stud bolt	Steel	3/8"–16 x 5/8" 1.5" Hex	0.2 lb.	Silver	Zinc Plated	
 Silicon Washer	ZSW	High temperature silicone washer that is encapsulated in the compression zone of the double stud bolt and flashing or metal roof standoff eliminates water infiltration.	High temperature silicone	1" O.D. x 3/8" I.D. x .094" Thick	< 0.1 lb.	Red	NA	
 Flashing	ZFLSH-CC	Sits on top of the base plate, and is attached with the double stud assembly. 26 ga.	Custom	10" L x 8"W x 0.6" H	0.7 lb.	Custom	Custom	
	ZFLSH-GS		Galvanized Steel		0.7 lb.	Silver	Mill	
	ZFLSH-GSBLK		Galvanized Steel		0.7 lb.	Black	Powder coat	
	ZFL06-GS		Galvanized Steel	12.5"L x 10"W x 0.6" H	1.0 lb.	Silver	Mill	
	ZFL06-GSBLK		Galvanized Steel		1.0 lb.	Black	Powder coat	
	ZFL08-GS		Galvanized Steel		14.5"L x 10"W x 0.6" H	1.2 lb.	Silver	Mill
	ZFL08-GSBLK		Galvanized Steel			1.2 lb.	Black	Powder coat
 Base Plate	ZBP-AL	Base plate is attached to the roof with lag bolts. Flashing is attached to the base plate using the double stud assembly.	Aluminum	3 7/8"L x 3"W x .52"H	0.2 lb.	Silver	Mill	
	ZBP-SS		Stainless Steel		0.4 lb.			
	ZBP-GS		Galvanized Steel		0.4 lb.			